



# VARIFLEX

The mobile acoustic partition system  
for flexible space utilisation

# CONTENTS



**Concepts**

Pages 4 – 17



**Individual planning**

Pages 6 – 7



**Design  
and aesthetics**

Pages 8 – 9



**Variflex Glass**

Pages 10 – 11



**Flexibility  
and user convenience**

Pages 12 – 13



**Acoustic insulation, fire  
protection and Variflex 88**

Pages 14 – 17



**Technology**

Pages 18 – 29



**Wall layouts  
and element types**

Pages 20 – 23



**Element design  
and construction**

Pages 24 – 25



**Stacking solutions  
and track systems**

Pages 26 – 27



**Facts and figures**

Pages 28 – 29



**Service**

Pages 30 – 31



## FLEXIBILITY IS EVERYTHING!

One room, one system,  
multiple functions.

Variflex from DORMA Hüppe is an outstandingly versatile movable wall system that allows rooms to be adapted quickly and flexibly to changing usage requirements and group sizes. Wherever rooms need to be divided, reduced in size or enlarged, Variflex demonstrates its special advantages.

With a variety of system components, Variflex offers individual solutions for practically any floor layout and application. Transparency and soundproofing can be combined with elegance, and the look, equipment and ease of operation can be selected according to requirements.

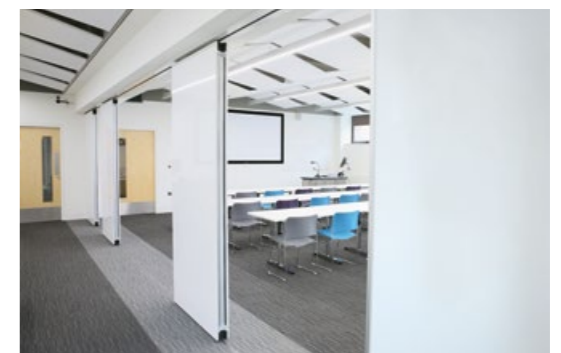
# HIGH FLEXIBILITY – STARTING AT THE PLANNING STAGE

## Intelligent solutions for efficient space management

The more complex the demands placed on a movable wall system, the louder the call for Variflex with its outstanding flexibility, technical sophistication and wide range of system components. The Variflex system offers tailor-made solutions even for areas with complicated dimensions and high ceilings. The ability to combine transparent and opaque elements offers additional planning options. For example, rooms can be partitioned with a high degree of openness and sound insulation, thus enabling parallel events to be held undisturbed in a light and spacious atmosphere.

## Benefits of the Variflex modular system at a glance

- High stability (steel-aluminium construction)
- Low weight: ease of handling und structural advantages
- Acoustic insulation up to  $R_w$  59 dB with optimised profiles and seals
- Variflex and Variflex Glass can be combined for acoustic insulation and transparency
- Manual, semi-automatic or fully automatic operation
- Smoke protection certificate EN 1634-3 as standard
- Sustainable: Environmental Product Declaration (EPD) to ISO 14025 and EN 15804



# FUNCTIONAL AND AESTHETIC DESIGN



## The visual appearance shapes the character of a room

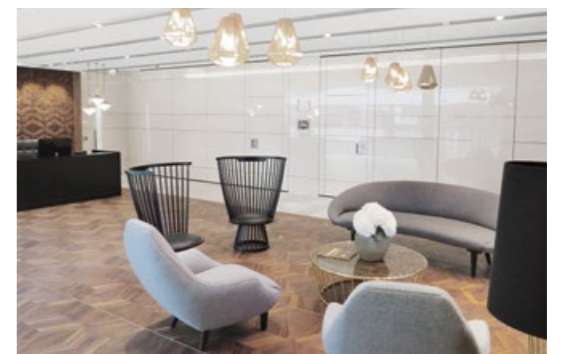
With an almost infinite choice of designs and colours to meet even the most sophisticated design and layout specifications, DORMA Hüppe Variflex comprehensively translates creative ideas into reality.

The Variflex system is able to satisfy the most demanding aesthetic needs with a multitude of style options. In addition, the high-quality materials and their visual effect are unsurpassed.

## Wide choice of high-quality materials

A broad array of finishes – from laminated surfaces and hardwood veneers to write-on magnetic surfaces and mirrors – guarantee the desired visual appearance for many years to come.

The use of exquisite materials alone or in combination can give a particularly attractive look.



# TRANSPARENCY AND SOUND INSULATION

## Glass elements expand the application spectrum of Variflex

Variflex Glass combines two different properties: transparency and sound insulation. This allows the partitioning of rooms with maximum openness and with high sound insulation up to  $R_W$  52 dB (according to EN 10140, laboratory value). Other strengths include the ability to combine Variflex 100 with Variflex Glass elements. The result is a uniform appearance that combines elegance with the technical advantages of the Variflex movable wall system. Fitting the system with switchable Magic Glass or internal blinds enables the level of visual screening to be adjusted as required. The "Extension" solution provides a maximum all-glass look even at corner elements.

## Variflex Glass Benefits at a glance

- More light, more space, more quiet
- Transparency and acoustic insulation combined, up to  $R_W$  52 dB
- Minimum frame structure
- Switchable Magic Glass – easy to change from clear to opaque with wall switch or remote (optional)
- Internal blinds for required level of screening (optional)



With internal blinds



Elegant blinds combine visual screening and transparency. As a "bottom-up" model, they can be moved comfortably from bottom to top, optionally with an intermediate "fanlight" stop.

Switchable Magic Glass



From transparent to translucent – simply by means of a wall switch or remote control. A practical solution when privacy rather than openness is desired.

Variflex combined with Variflex Glass



Flexible room design with opaque Variflex 100 and transparent Variflex Glass elements. Both element types are compatible.

# MANUAL OR SEMI-AUTOMATIC

## Standard manual operating system

The manual system offers a high level of operating ease with simple, safe movement of the elements by hand into the required position.

The top and bottom sealing strips are actuated manually with ease using a crank. The spindle mechanism then extends the spring-loaded, flexible double-chamber seals against the floor and the ceiling track.

## ComforTronic for greater convenience

Operation with semi-automatic ComforTronic technology requires even less effort, with added safety a further benefit.

- Extension and retraction of the sealing strips is electronically controlled, eliminating both the time and effort of manual crank operation
- Precisely controlled contact pressure of the sealing strips is assured
- Floor-mounted guides and special track rails are not required
- Door and window elements can be fitted

# FULLY AUTOMATIC PREMIUM SYSTEM

The ComfortDrive system offers all the advantages of state-of-the-art bus technology. This fully automatic control unit moves the elements quickly and engages them in the required position at the touch of a button. In addition to the standard functions, customised positioning and personnel access settings can also be programmed into the system.

## ComfortDrive – the premium option

- Elements moved completely automatically by means of keypad, Premium touch display (optional) or, in future, smartphone app
- Greater convenience thanks to fast partition travel at speeds of up to 250 mm/s
- Intelligent bus technology can be individually programmed to specific customer requirements
- Reliable safety with automatic stop on contact with an obstruction
- Slender track sections
- Slimline floor tracks



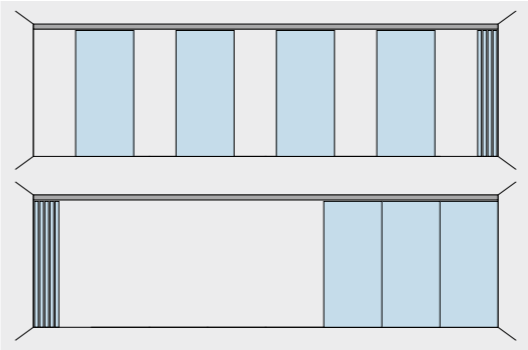
Fully automatic movement of elements with ComfortDrive keypad.



User-friendly control with self-explanatory Premium touch display (optional).



## Individually programmable



Just two of the many options that customers can program individually for flexible management of their interior space: The top figure shows a freely selected position, with a partially open position (with one or multiple elements) at the bottom.

## High travel speed



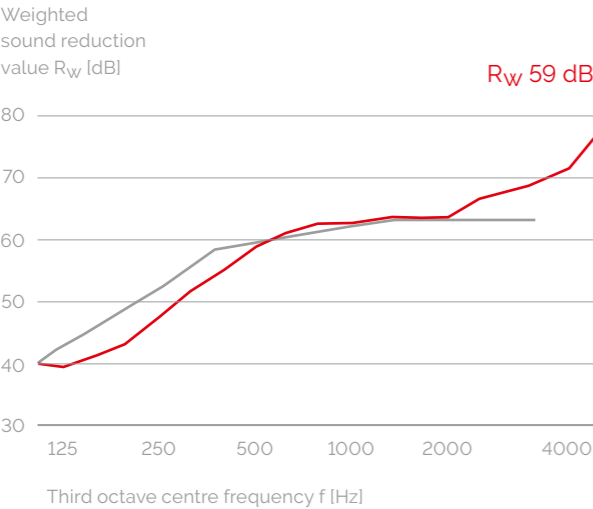
Fast opening, fast closing: ComfortDrive quickly moves the Variflex elements into the desired position, monitored by our Smart Control system.

# LEADING THE FIELD IN SOUND INSULATION

## An excellent solution for parallel events

As well as having the function of visually subdividing areas, movable partition walls also have the role in many applications of filtering acoustic signals in order to prevent noise disturbing the users of the other rooms. Room partitioning with reliable acoustic insulation properties is a must, particularly when events run concurrently.

The DORMA Hüppe Variflex system ensures unsurpassed sound insulation without compromising ease of use. As freely oscillating elements, the clip-on fascia boards reduce the transmission of structure-borne noise, thus ensuring extremely high acoustic performance.



## Enhancing the well-being of room users

Special acoustic panels increase sound absorption and reduce reverberation. These advantages, coupled with the high quality standards and visual impact of DORMA Hüppe Variflex, greatly enhance user comfort and offer incomparable benefits for areas where people come together to communicate.



Variflex Acoustic: effective and elegant acoustic surface finishes.



# SO FIRE DOESN'T HAVE A CHANCE: VARIFLEX EI 30

## Developed for fire prevention

Safeguarding human life is the top priority at all times. Fire prevention and protection must be guaranteed, above all in public areas. Developed specifically for fire prevention, the Variflex EI 30 movable wall system from DORMA Hüppe is classified in accordance with the new EN 13501-2 standard. What's special about this system is that it can also be fitted with a pass door tested to EN 1634-1. Its construction further permits a sound insulation value of up to  $R_W$  57 dB.



In order to ascertain the fire resistance class, a Variflex EI 30 wall with an integrated pass door was directly subjected to fire for over 30 minutes in a test lab.

# LIGHTWEIGHT AND SOUND INSULATING: VARIFLEX 88

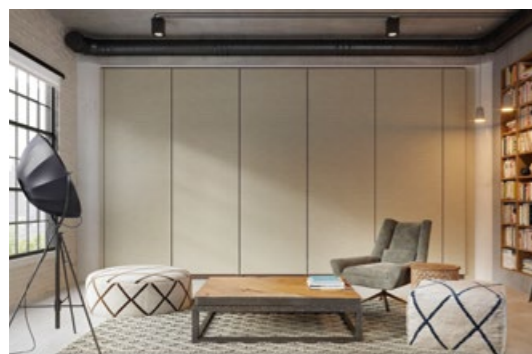
## Sensational design achieves 58 dB sound reduction

The DORMA Hüppe development team took on the significant challenge of achieving better sound insulation with a thinner partition wall – and solved the problem to impressive effect with the Variflex 88. The recently developed design exhibits an exceptionally high degree of imperviousness, complemented by optimised profiles and sealing strips to produce outstanding sound reduction values of up to  $R_W$  58 dB. With a wall thickness of just 88 mm, the weight per unit area is also significantly reduced, bringing both structural and handling benefits.

## Variflex 88 Advantages at a glance

- Improved sound insulation with reduced wall thickness
- Space savings in the stacking area
- Low weight gives structural benefits
- Easy handling
- Tested by the Fraunhofer IBP (Institute for Structural Physics)

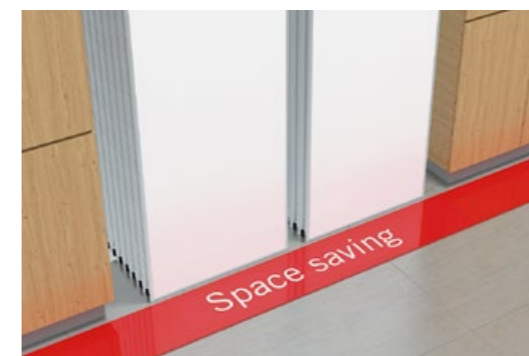
# SMOKE PROTECTION TO EN 1634-3



## Variflex system with certified smoke protection

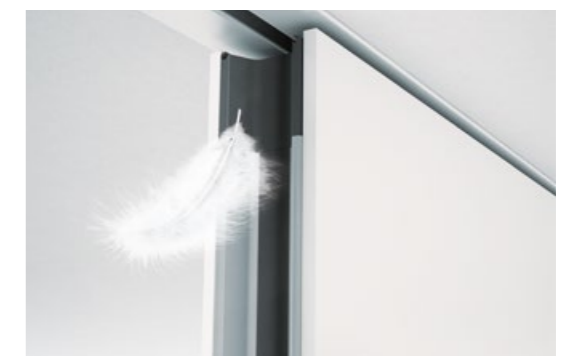
Because toxic smoke poses a high risk to health in the event of fire, smoke protection is of great importance when constructing buildings. The Variflex 88/100 meets the EN 1634-3 smoke control standard for full and telescopic elements. When closed, their high impermeability prevents the spread of fumes in the building.

## Space savings in the stacking area



More room with 12% less wall thickness. You save space – and space is expensive. With Variflex 88, stacking areas and niches can be made smaller to improve overall spatial efficiency.

## Significantly reduced specific weight



Variflex 88 reduces the load: Right at the planning stage, the lower weight means less stringent structural requirements. And the handling of the elements in day-to-day operations also requires less effort.

## INTELLIGENT TECHNOLOGY, SYSTEMATICALLY DEPLOYED.

One system, one flexible  
space management system,  
numerous functions.

It is its refined technology that makes Variflex such a special sound-insulating movable wall system. Its success resides in a multitude of smart details that have been cleverly combined to create an effective whole. Various element types cater for widely differing applications. The track layout is so adaptable that a movable wall system can be designed to fit even in places where space is at a premium. Wherever installed, the DORMA Hüppe Variflex will always deliver the impressive acoustic performance inherent in the sophisticated makeup of its elements. In short, a compelling and intelligently designed system.

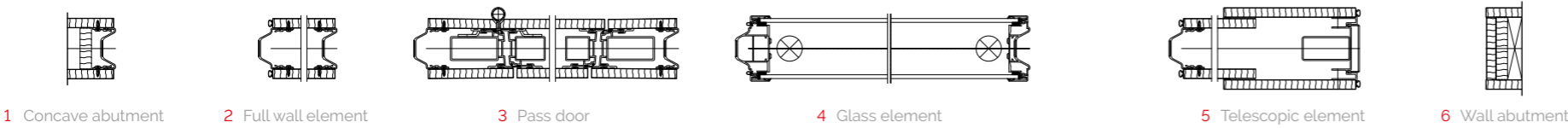
# WALL LAYOUTS FOR ANY ROOM

| Possible pass door versions in (mm) | Min. clear height of the unit (min. CH) | Clear passage height (CPH) | Width of element (WE) | Clear width (CW), one leaf open | Clear passage width (CPW), two leaves open |
|-------------------------------------|---|----------------------------|-----------------------|---------------------------------|--|
| Pass door                           | 2450                                    | 2100                       | 1110                  | 820                             | —  |
|                                     | 2450                                    | 2100                       | 1210                  | 920                             | —  |
|                                     | 2450                                    | 2100                       | 1290                  | 1000                            | —  |
| Double pass door                    | 2450/2640*                              | 2100                       | 976                   | 820                             | 1622                                       |
|                                     | 2450/2640*                              | 2100                       | 1076                  | 920                             | 1862                                       |
|                                     | 2450/2640*                              | 2100                       | 1156                  | 1000                            | 2022                                       |

\* Double pass door with semi-automatic operation



- a Ölflex cable by others. 4×1.5 mm². Length 6 m standard, leading to the concave wall abutment ("SL")
- b Control unit (254×180×90 mm)
- c Power cable by others 3×0.75 m². Length 15 m
- d Socket by others 230 VAC ± 10%. 50 – 60Hz. with 10 – 16A fuse protection
- e Cable by others min. 4×0.6 mm². max. 4×1 mm. max. length 20 m
- f Key switch by others



# DIFFERENT ELEMENTS FOR DESIGN FLEXIBILITY

## A range of element types for every requirement

The various types of element available within the Variflex system can be used in applications of almost any kind and in the most diverse settings.

Variflex elements can satisfy unique design features and specifications and incorporate

door elements or a variety of glazing options. The modular nature of the Variflex system offers ideal solutions for practically any layout or usage situation, e.g. straight, angular, T-shaped or intersecting layouts and transparent or opaque elements.



Full wall element (VE)



Telescopic element (TE)



Manually or automatically operated wall abutment (AWA)



Angled element (WE)\*\*



Corner element 90° (EE) and T-configurations



Glass element (GE)\*



Double pass door (DTZ)



Pass door within element (DT)



Fixed full-height pass door (FT)



Window element (FE)\*



Pass door element with window



Glass pass door (GDT)\*/\*\*

\* Not for Variflex 88 | \*\* In preparation

# FUNCTIONALITY IN EVERY DETAIL



## 1 Horizontal seals

Correct contact pressure with extendable, spring-loaded double-chamber seals increases sound insulation and stability and evens out floor irregularities

## 2 Corner seals

Elastic corner pieces increase the stability and sound insulation

## 3 Element connections

Large-area convex/concave positive locking with deep profile interlocking (optional magnetic strip)

## 4 Cover panels

Clipped on as freely oscillating bodies for optimum sound insulation, can be replaced without removing the elements

## 5 Sound insulation material

Models can be fitted with additional insulation material according to requirements

## 6 Operating handle

Crank handle for manually extending and retracting the sealing strips

## 7 Frame

Stable steel and aluminium construction with outstanding strength and sound insulation

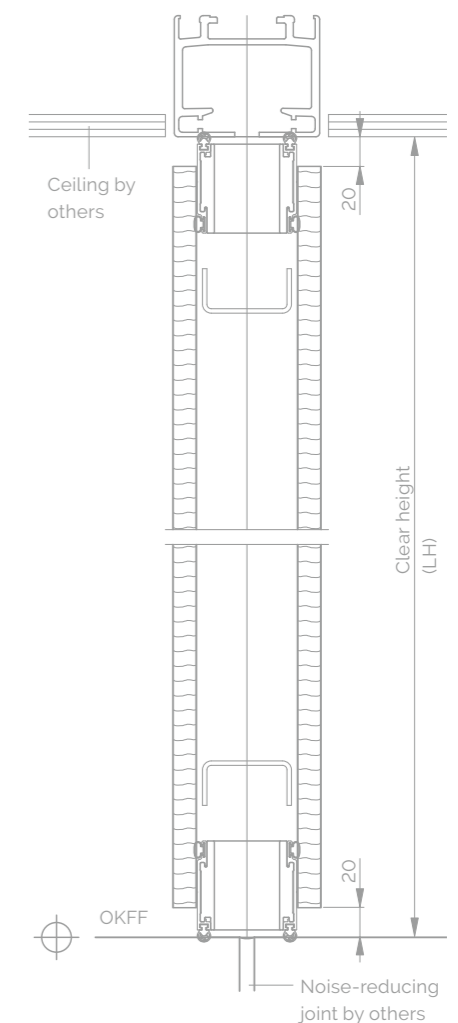
## 8 Semi-automatic ComforTronic

Convenient electronically controlled extension and retraction of the sealing strips. Can be operated manually in the event e.g. of power outage

## 9 Contacts

ComforTronic end-face element contacts with plug-and-play technology

## Vertical section



K-type visible surface edging



U-type protective surrounding trim

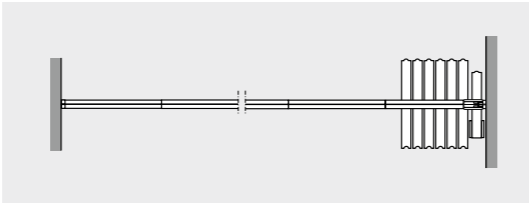
# EASY PARKING

## Space-saving solutions

In their stacked position, the elements form a compact package and can be accommodated in the smallest of spaces, depending on the room layout. The low weight of the elements and the associated structural advantages are

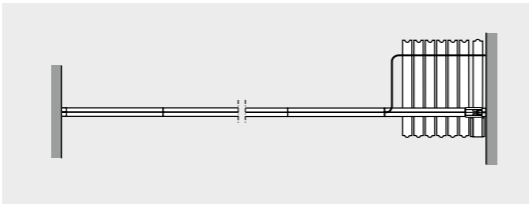
particularly noticeable here. Below you will find illustrations of four standard stacking arrangements by way of example; individual solutions for special requirements are also possible. The four standard track systems offer convenient operability with a minimum of noise from the individual elements as they slide into position.

### Inline stacking solutions



**Stacking solution PLA**

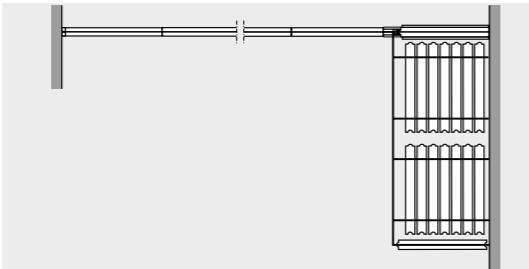
- Single-point suspension
- 90° to partition axis



**Stacking solution PLB**

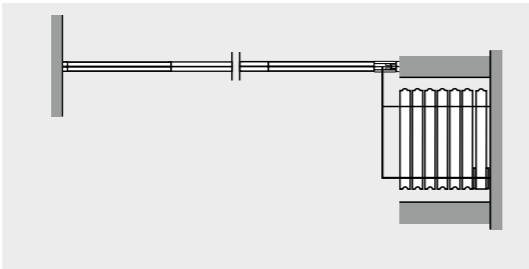
- 2-point suspension
- 90° to partition axis

### Offline stacking solutions



**Stacking solution PLC**

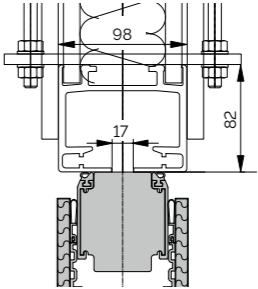
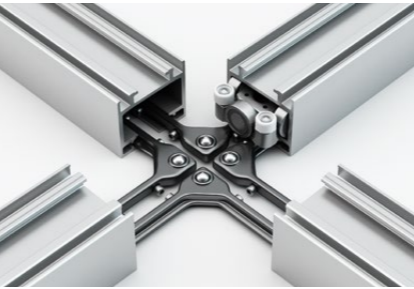
- 2-point suspension
- 90° to partition axis
- In several stacks – here with longer, extendable wall abutment AWA and element as two-sided stack covering



**Stacking solution PLD**

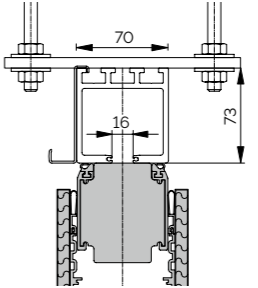
- 2-point suspension
- 90° to partition axis
- Parking in niche

## Track systems



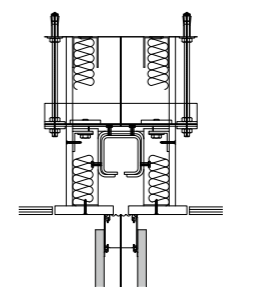
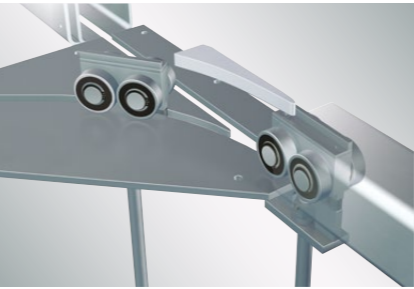
**R-type track**

Track system for right-angled configurations with cross-roller carriers for element weights up to 500 kg. Support rollers in the junctions guarantee easy operation when sliding the elements across intersections.



**K-type track**

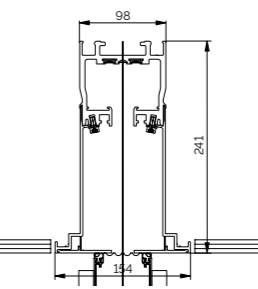
Mechanically coded junction technology with curves and switches for element weights up to 250 kg.



**i-Track**

Steel track system for large element heights and weights, with special mechanical coding in the carriers, plus curves and switches for maximum operating ease and effortless positioning of the elements.

## Track system with fully automatic drive



**ComfortDrive**

Fully automatic track operator system for element weights of up to 500 kg. Fast opening and closing speeds for enhanced convenience. Easy pushbutton operation. Narrow profiles and slender track sections for aesthetic elegance. Suitable for use without floor-mounted guides if required.

# THE IDEAL PARTITION FOR SPECIAL REQUIREMENTS

|   | Variflex 100   | Variflex Glass    |   |     |     |     |
|---|--|-------------------|---|-----|-----|-----|
| Dimensions in mm*   |  |                   |   |     |     |     |
|   | Element thickness  | 100               | 100   |     |     |     |
| Manual (M)  | Clear height* (min./max.)  | 2 000/14 500      | —   |     |     |     |
|   | Element thickness* (min./max.)   | 600 (TE 700)/1250 | —   |     |     |     |
| Semi-Automatic (ComforTronic)   | Clear height* (min./max.)  | 2180/6 000        | 2 000/4 000   |     |     |     |
|   | Element thickness* (min./max.)   | 820/1250          | 750/1250  |     |     |     |
| Fully automatic (ComfortDrive)  | Clear height* (min./max.)  | 2180/6 500**      | 2 000/4 000   |     |     |     |
|   | Element thickness* (min./max.)   | 820/1250          | 750/1250  |     |     |     |
| Design  |  |                   |   |     |     |     |
| Frame construction  | Aluminium-steel  |                   | Aluminium   |     |     |     |
| Frame profile width   | —  |                   | horizontal 118 mm; vertical 30 mm                               |     |     |     |
| Profile finish  | —  |                   | ■ Alu E6/CO      □ Colour-coated                                |     |     |     |
| Panel fixing  | Freely oscillating   |                   | —   |     |     |     |
| Element interconnection convex/concave  | Aluminium profile with sealing lips and optional magnetic strip            |                   |   |     |     |     |
| Edging and trim   |  |                   |   |     |     |     |
| Visible surface edging (K-type)   | ■  |                   | —   |     |     |     |
| Protective surrounding trim (U-type)  | □  |                   | —   |     |     |     |
| Manual model (M)  |  |                   |   |     |     |     |
| Manual operation of the elements and actuation of the sealing strips  | ■  |                   | —   |     |     |     |
| Semi-automatic model (ComforTronic)   |  |                   |   |     |     |     |
| Manual operation of the elements, electronically controlled extension and retraction of the sealing strips          | □  |                   | ■   |     |     |     |
| Fully automatic model (ComfortDrive)  |  |                   |   |     |     |     |
| Fully automatic operation of the elements, electronically controlled extension and retraction of the sealing strips | □  |                   | □   |     |     |     |
| Smoke protection (VE, TE)   | ■  |                   | —   |     |     |     |
| Fire protection package EI 30   | □  |                   | —   |     |     |     |
| Pass doors  | Single or double-leaf  |                   | Single-leaf, all-glass  |     |     |     |
| Glazing   | —  |                   | Double-glazed, toughened safety glass or laminated safety glass |     |     |     |
| Visual screening  |  |                   |   |     |     |     |
| Electronically controlled blinds  | —  |                   | □ Standard finish: Aluminium                                    |     |     |     |
| Electrically switchable Magic Glass   | —  |                   | □   |     |     |     |
| Surface finishes  |  |                   |   |     |     |     |
| Standard Classic Collection   | ■ Melamine      □ HPL  |                   |   |     |     |     |
| Premium   | □ Design Collection<br>□ Functional Collection<br>□ Other surface finishes |                   |   |     |     |     |
| Technology  |  |                   |   |     |     |     |
| Weighted sound reduction determined as per EN 10140 in R <sub>w</sub> (dB) – laboratory value                       | kg/m²  | 30 – 59           | Glass   | TSG | LSG | LSG |
|   | dB   | 39 – 59           | kg/m²   | 49  | 45  | 56  |
|   |  |                   | dB  | 47  | 50  | 52  |

## Variflex 88

|   |  |
|---|--|
| Dimensions in mm*   |  |
| 88  |  |
| 2 000/3 000   |  |
| 600 (TE 700)/1100   |  |
| 2 180/3 000   |  |
| 820/1100  |  |
| 2 180/3 000   |  |
| 820/1100  |  |
| Design  |  |
| Aluminium-steel   |  |
| —   |  |
| —   |  |
| Freely oscillating  |  |
| Aluminium profile with sealing lips and optional magnetic strip |  |
| Edging and trim   |  |
| ■   |  |
| □   |  |
| ■   |  |
| □   |  |
| ■   |  |
| □   |  |
| ■   |  |
| —   |  |
| Single or double-leaf   |  |
| —   |  |
| —   |  |
| —   |  |
| Surface finishes  |  |
| ■ Melamine  |  |
| —   |  |
| Technology  |  |
| kg/m²    23    24    32    41    49                             |  |
| dB    41    46    53    56    58                                |  |



- Standard
- Optional

\* Larger widths possible on request. Provisional details in the brochure regarding element heights and widths can only be confirmed by consultation with the Design Department.  
\*\* Depending on sound insulation / weight.

# PROFESSIONAL ONE-STOP SERVICE



## Excellent advice – from the initial idea to aftercare

Whether you are building from scratch, rebuilding or modernising, by choosing a movable wall system from DORMA Hüppe you will benefit from outstanding product quality and the expert advice of our team.

We will oversee your projects, providing individual advice and the latest architectural tools for integrated planning and installation as well as a proficient aftersales service to ensure that your partition system functions dependably for many years to come.

## EPD Certificate for all DORMA Hüppe systems

For the evaluation of Green Building Projects in accordance with the DGNB (German Sustainable Building Council) or LEED for example, a life cycle assessment (LCA) for the building materials is required detailing the entire product life cycle. This is provided in the form of an Environmental Product Declaration (EPD) in accordance with ISO 14025 and EN 15804 and is available for all DORMA Hüppe partitions.

## Building Information Modelling (BIM)

Today's building projects are initially based on virtual planning, followed by the real construction work. By generating digital, object-oriented 3D models, BIM increases efficiency in the planning, construction and management of buildings. To optimise your planning processes, all DORMA Hüppe movable wall systems are available as up-to-date BIM models.



## Enhancing the reliability of your partition system

Regular servicing ensures that the high quality of DORMA Hüppe mobile wall systems is maintained well into the future. Our Service Department will provide whatever assistance you require – personally, proficiently and reliably.

## A servicing agreement offers many benefits:

- Increases the lifespan of your system
- Minimises downtime
- Extends the warranty
- Ensures adherence to legal standards (operator liability)
- Ensures the use of original spare parts
- Ensures preferential treatment in the event of malfunctions





dormakaba Group

DE

**DORMA Hüppe  
Raumtrennsysteme  
GmbH + Co. KG**

Industriestraße 5  
26655 Ocholt  
GERMANY  
P +49 4409 666-0  
F +49 4409 666-489  
[info-hueppe@dormakaba.com](mailto:info-hueppe@dormakaba.com)  
[www.dorma-hueppe.com](http://www.dorma-hueppe.com)

AT

**DORMA Hüppe  
Austria GmbH**

Hollabererstraße 4b  
4020 Linz  
AUSTRIA  
P +43 732 600451  
F +43 732 650326  
[office@dorma-hueppe.at](mailto:office@dorma-hueppe.at)  
[www.dorma-hueppe.at](http://www.dorma-hueppe.at)